



2026

RSCCD

LEGISLATIVE BRIEF



About RSCCD

Rancho Santiago Community College District (RSCCD) is one of the most established districts in the state and has been in operation for nearly 50 years. The District, encompassing a service area of several major communities, including Santa Ana, Orange, and Anaheim Hills, has a population of over 700,000 residents, representing approximately 25 percent of Orange County’s total area. A bond measure approved in 2012 allocated \$198 million to the District in an effort to renovate and construct several facilities, particularly for Santa Ana College, including the campus’ Johnson Student Center. Analyzing its impact on the total District economy in 2023/24, RSCCD found that its complete operations spending for the previous year amounted to \$324 million, translating to the support of nearly 4,000 jobs in the area.

The District provides students every year the ability to enhance their personal and professional lives in innumerable ways. In 2024/25, the District awarded 27 bachelor’s degrees, 4,633 associate degrees and 4,201 certificates of achievement to students across its two colleges. RSCCD also helped 3,170 students transfer to four-year universities, mainly to the University of California and California State University systems through successful pathways programming. RSCCD’s three auxiliary Foundations are actively involved in supporting both community and campus programs.

Contents

Benefitting Students.	3
Benefitting Taxpayers.	3
Impact Created by RSCCD.	3
Enrollment and FTES Comparison	4
RSCCD Grants Awarded.	5
Santa Ana College Overview	6
Santiago Canyon College Overview	7

Education Returns Value for Money Spent

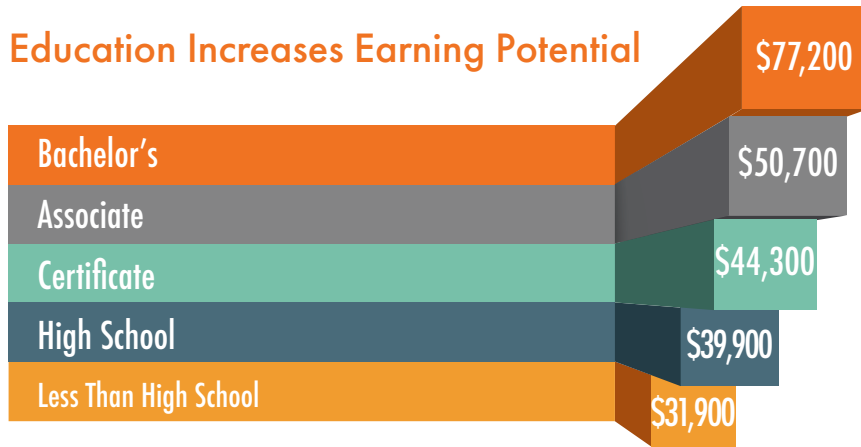


In return for the monies invested in the colleges, students will receive a present value of

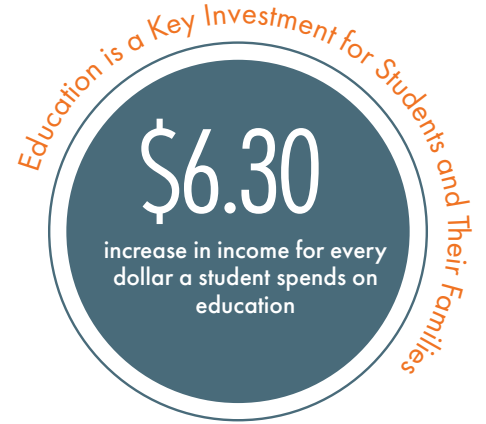
\$2.4 BILLION

in increased earnings over their working lives

Education Increases Earning Potential



Annual Earnings based on Educational Level Completed



Students' higher lifetime earnings and the increased output of businesses amounts to

\$567.7 million in Taxpayer Benefits



One out of every
96 JOBS

in Orange County is supported by the activities of RSCCD and their students.

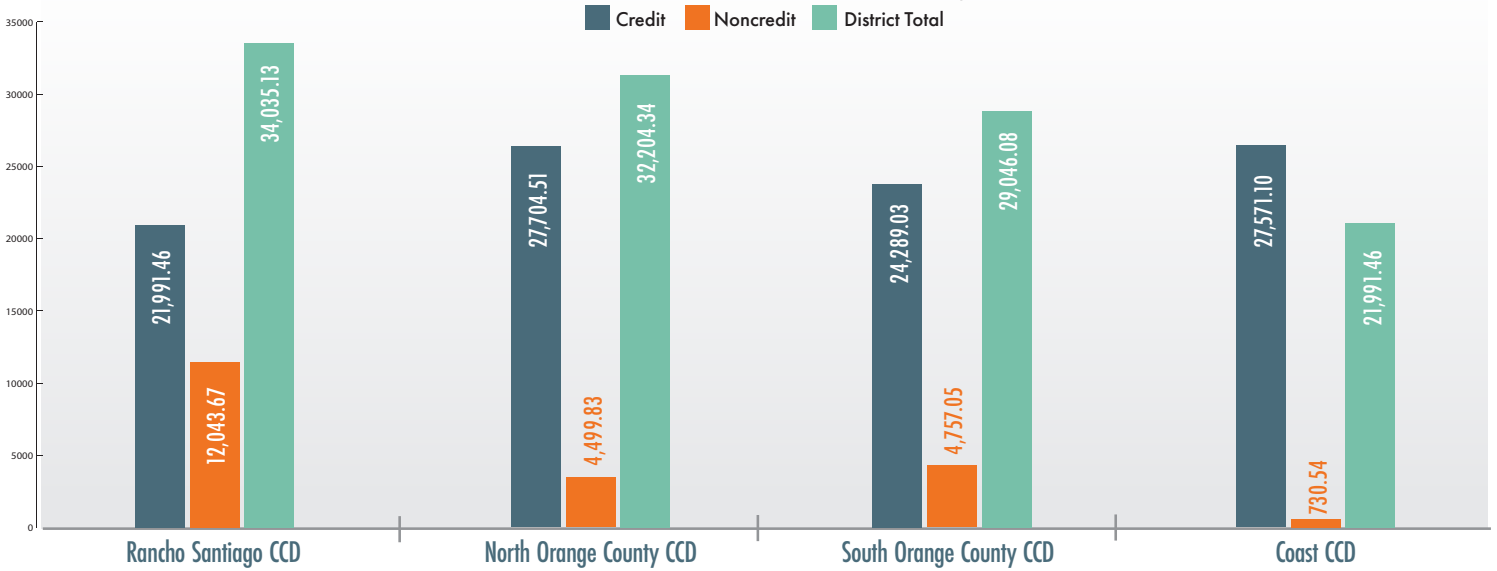
IMPACTS CREATED BY RSCCD IN FY 2023-24

ADDED INCOME	JOBS
\$323.8 million	3,906
OPERATIONS SPENDING IMPACT	
\$8.6 million	73
CONSTRUCTION SPENDING IMPACT	
\$169.5 million	2,319
STUDENT SPENDING IMPACT	
\$1.9 billion	19,007
ALUMNI IMPACT	
\$2.4 billion	25,305
TOTAL IMPACT	

*Data Source Analysis of the Economic Impact and Return on Investment of Education, Rancho Santiago Community College District

A Leader in Enrollment

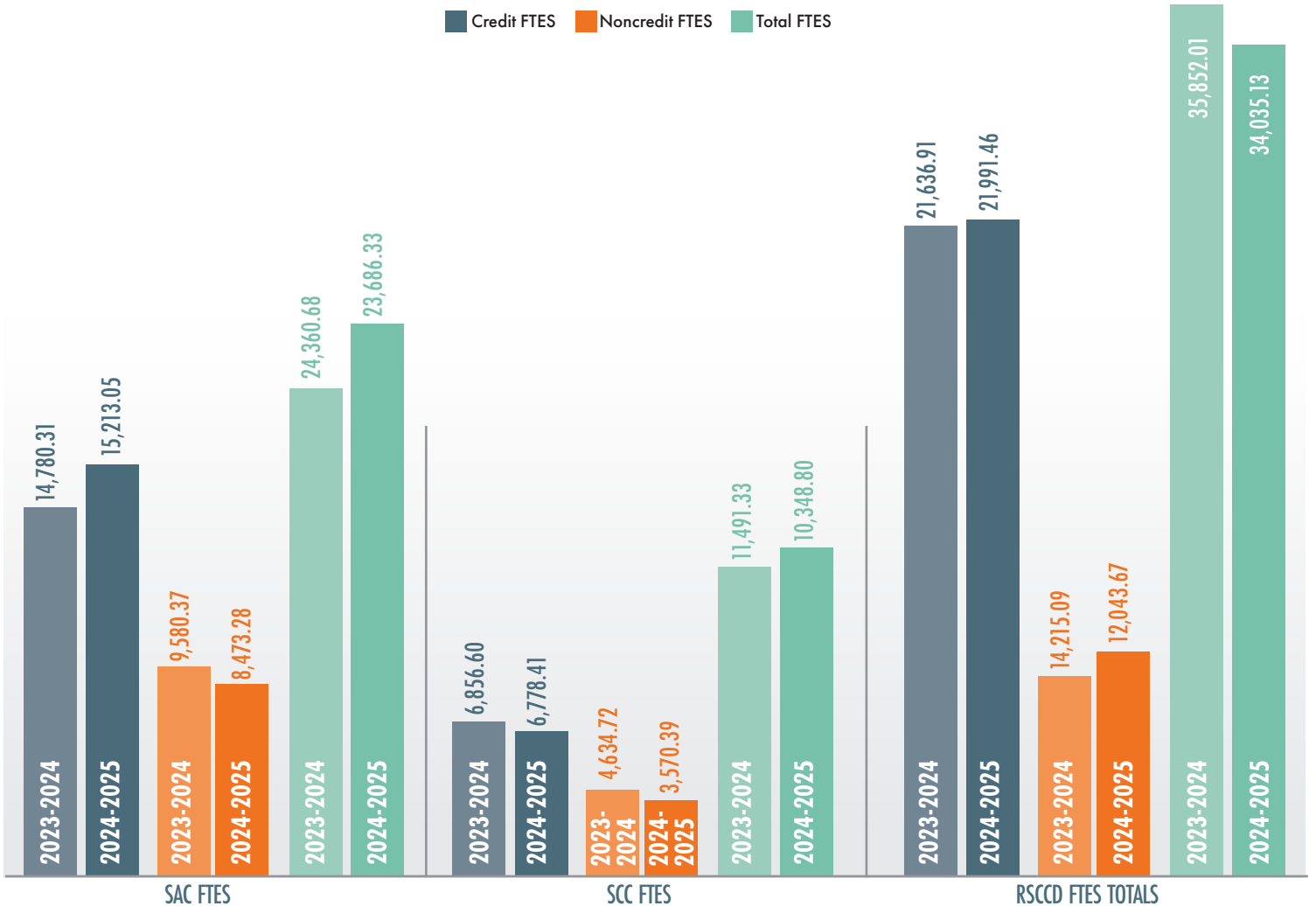
Orange County Community College Districts
2024-25 Generated FTES Rankings



RSCCD ranks 1st among Orange County CCDs for overall 2023/2024 & 2024/25 Generated FTES

RSCCD ranks 1st among Orange County CCDs for overall 2023/2024 & 2024/25 Noncredit Generated FTES

SAC, SCC, and RSCCD Year-Over-Year FTES Comparison



RSCCD 2024/2025 Grant Highlights

\$3,910,000 Congressional Earmark



\$1,030,000 Department of Justice grant to improve training facilities and degree pathways programs for SAC's Sheriff's Academy Criminal Justice Officer trainings.



\$1,030,000 National Institute of Science and Technology - support a collaborative project to Advance Clean Technology by supporting business start-ups in the field, providing training and technical assistance to update their systems to be sustainable, including leveraging AI tools to support efficiency and good resource management.



\$1,000,000 to SCC to remodel Water/Wastewater and Biotechnology Programs to provide workforce training commensurate with industry standards.



\$850,000 to SAC to remodel Auto/Diesel/Welding Technician instructional space to increase capacity to meet student and employer demand.

Rebuilding Nursing Infrastructure

Develop SAC Nursing Simulation Lab to retain and support nursing students and to prepare them for clinical sites and employment

\$1,712,000

Develop a pathway from SCC's PreNursing associate degree program to UCI's BSN program.

California Jobs First



Grants awarded to our Adult Education Centers:

\$500,000

to build a Culinary Arts Kitchen that will prepare adult learners for in-demand jobs in the region as chefs and small business owners

to build an LVN program which will provide critical access for low-income, adult earners who want to enter the nursing field.



U.S. Department of Education

\$1,090,000

TRIO awards to SAC and SCC to provide academic and support services to low-income, first-generation students to increase their persistence, success, graduation and/or transfer to the 4-year universities.

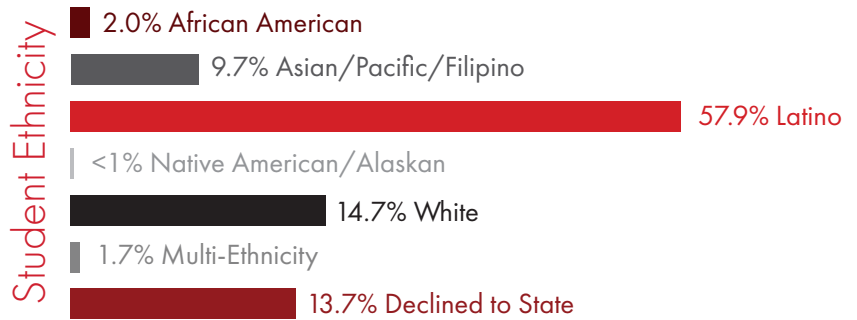


SANTA ANA COLLEGE

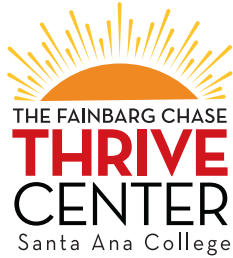
Focused On Your Future

83,858

Students Served



SAC is ranked 3rd in CA in Noncredit and Overall Full Time Equivalent Students (FTES)



Providing SAC students access to basic needs such as food, clothing, career workshops, and shelter.



Providing services to SAC students who are undocumented and currently enrolled in Santa Ana College.



Providing educational resources and services, to foster the personal, professional, and academic success of Black/African American and other underrepresented students.

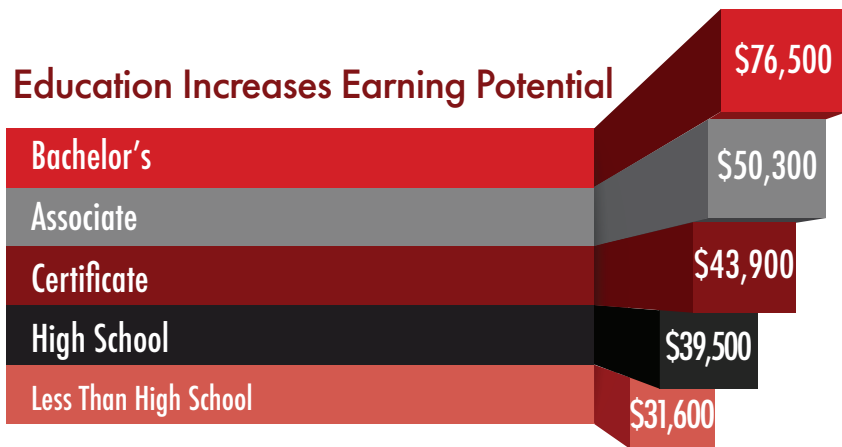


Providing assistance to Asian Pacific Islander students, including students transitioning from non-credit, with college and career readiness.

	Student Perspective	Taxpayer Perspective	Social Perspective
Present value benefits	\$829.9 million	\$427.2 million	\$4.8 billion
Present value costs	\$134.3 million	\$203.4 million	\$0.3 billion
Net present value	\$695.5 million	\$223.8 million	\$4.5 billion
Benefit-cost ratio	6.2	2.1	15.9
Rate of return	24.6%	5.9%	N/A*

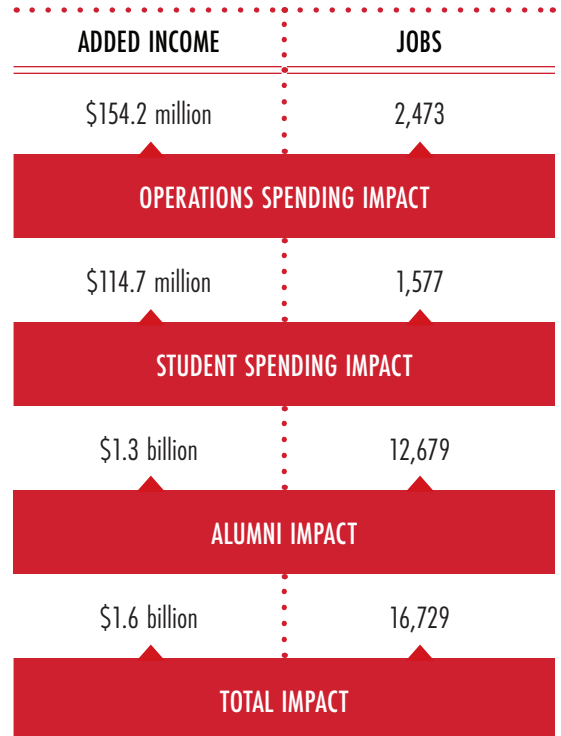
* The rate of return is not reported for the social perspective because the beneficiaries of the investment are not necessarily the same as the original investors.

Education Increases Earning Potential



Annual Earnings based on Educational Level Completed

IMPACTS CREATED BY SAC IN FY 2023-24



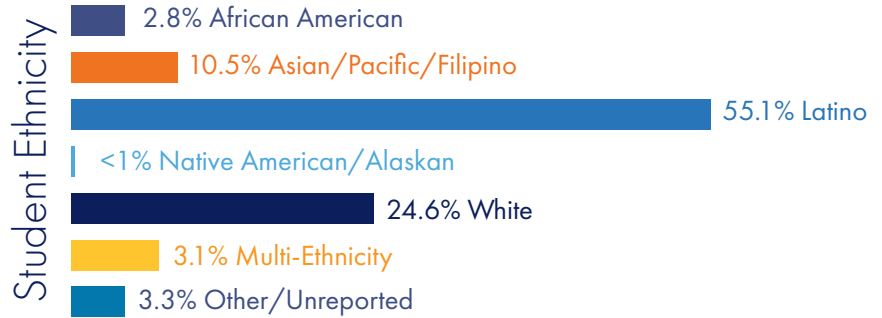
* Data Source Analysis of the Economic Impact and Return on Investment of Education, Santa Ana College



Santiago Canyon College

What happens here matters.

35,555
Students Served



SCC is ranked 7th in CA in Noncredit Full Time Equivalent Students (FTES)



Providing Black and all students of color with a myriad of support systems that buttress what they have in place, and contribute where support in their lives may be scarce.



Providing assistance to veteran students as they transition from military life to student life.



Santiago Canyon College
HAWK'S NEST
FOOD PANTRY

Providing support for SCC students' academic potential, creativity, as well as their personal and professional growth by providing free and nutritious food for students and their families.

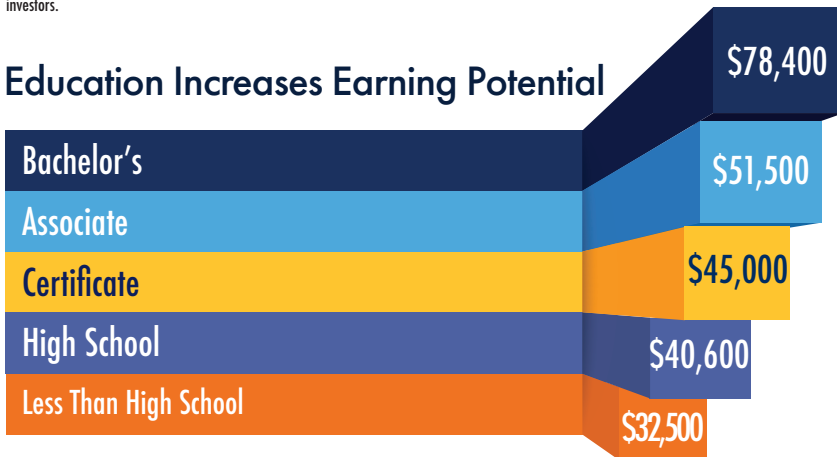


Providing holistic and comprehensive services in order to help students successfully reach their academic goals.

	Student Perspective	Taxpayer Perspective	Social Perspective
Present value benefits	\$383 million	\$199 million	\$2.3 billion
Present value costs	\$55 million	\$101 million	\$0.1 billion
Net present value	\$328 million	\$98.4 million	\$2.1 million
Benefit-cost ratio	7.0	2.0	16.1
Rate of return	24.7%	5.0%	N/A*

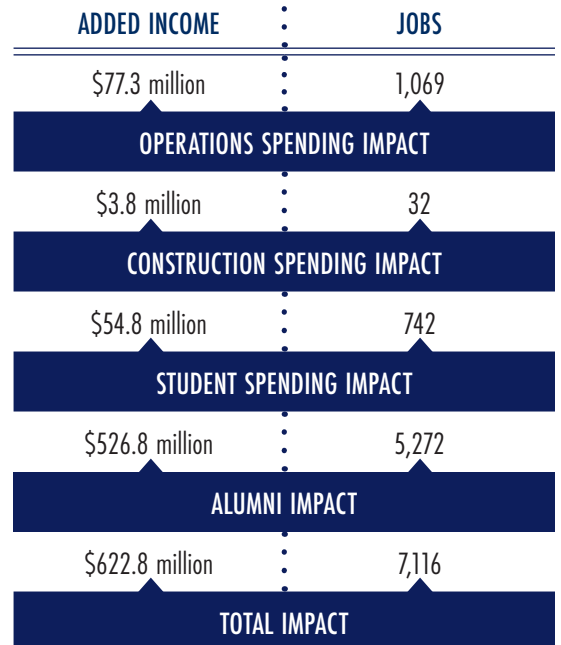
* The rate of return is not reported for the social perspective because the beneficiaries of the investment are not necessarily the same as the original investors.

Education Increases Earning Potential



Annual Earnings based on Educational Level Completed

IMPACTS CREATED BY SCC IN FY 2023-24



*Data Source Analysis of the Economic Impact and Return on Investment of Education, Santiago Canyon College



2323 N. Broadway, Santa Ana, California 92706-1640
(714) 480-7300

rsccd.edu



To view Economic Impact Reports, scan below



RSCCD BOARD OF TRUSTEES

Tina Arias Miller, Ed.D. • David Crockett • John R. Hanna • Zeke Hernandez
Cecilia P. Iglesias • Daisy X. Tong • Phillip E. Yarbrough

RSCCD CHANCELLOR

Marvin Martinez

SANTA ANA COLLEGE PRESIDENT

Annebelle Nery, Ph.D.

SANTIAGO CANYON COLLEGE PRESIDENT

Jeannie G. Kim, Ph.D.